



## Mearns Place

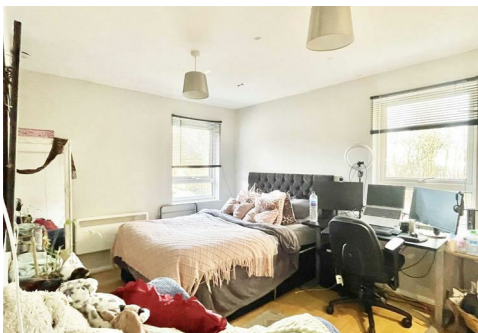
Chelmsford, CM2 6TT

**£125,000**

Leasehold  
Tax Band: A



Being sold with NO ONWARD CHAIN is this first floor studio apartment, offering a spacious lounge/bedroom, fitted kitchen, bathroom, private residents parking with visitors spaces, and communal garden areas. IDEAL FOR FIRST TIME BUYERS or as a buy to let investment. Located in a quiet cul-de-sac in Chelmer Village. Contact Hamilton Piers, Chelmer Village's local specialists, to view!



## Mearns Place, Chelmsford, CM2 6TT

---

### COMMUNAL ENTRANCE:

Well kept communal areas, stairs to first floor with door to flat.

### ENTRANCE HALL:

Entrance to flat with door to bathroom and lounge/bedroom.

### BEDROOM/LOUNGE:

12'04" x 9'11" (3.76m x 3.02m)

Dual aspect double glazed windows rear and side, built in storage cupboards, electric heater, door to kitchen.

### KITCHEN:

9'04" x 5'03" (2.84m x 1.60m)

Double glazed window to rear, roll edge worktops with stainless sink inset, matching wall and base units, electric hob with extractor over, oven, tiled splashbacks, washing machine, fridge.

### BATHROOM:

6'02" x 5'04" (1.88m x 1.63m)

Bath with shower over, vanity hand basin, low level W/C, loft hatch.

### EXTERIOR:

Residents parking with visitors spaces available, well kept communal gardens.

### LEASEHOLD INFORMATION:

Years Remaining: Approx 954

Service Charge: ££1,307.57 Per Annum.

Ground Rent: £0



At Hamilton Piers we aim to ensure our particulars are accurate and reliable. However, they do not constitute any offer or contract, nor are they to be taken as statements or representations of fact. No tests have been carried out by us in respect of services, systems or appliances contained in the specification and no guarantee as to their operating ability or efficiency is given (unless stated otherwise).

All measurements are a guide only and, therefore, can be approximated in some cases. If purchasing, fixtures and fittings, apart from those mentioned in the particulars, are to be agreed with the seller. Some particulars, please note, may also be awaiting the seller's approval. If clarification or further information is required, please contact us.

AWARD WINNING SALES AND LETTINGS ACROSS ESSEX

01376 341 141 | 01245 269 777 | 01621 212 450 | 01371 809 500 | 0207 079 1510



Zoopla.co.uk

rightmove

onTheMarket.com